



Value Packed



PAPERBOARDS  
AND  
SPECIALTY  
PAPERS DIVISION

## CONDENSED SPEC SHEET\*

### Grade Name: PEARL XL PACKAGING

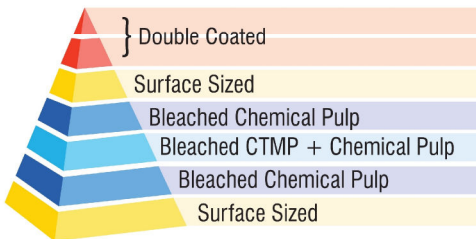
A value-packed Folding Box Board (FBB) designed for optimum strength and printability.

SUBSTANCE (GSM) (Avg.)	CALIPER (μM) (Avg.)	BENDING RESISTANCE (L&W) mN		
		Tappi T 556		
Tappi T 410	Tappi T 411	MD	CD	GM
200	300	125	60	87
230	345	190	90	131
260	390	285	130	192
270	405	315	145	214
290	435	380	175	258
300	450	430	205	297
320	480	514	252	360
350	525	638	297	435
370	555	715	352	502
400	600	924	430	630
TOL : ± 3%		± 5%		- 15%

CERTIFICATIONS & COMPLIANCES	
Manufacturing	ISO 9001, ISO 14001, ISO 45001
Environmental & Safety	FSC® CoC, Light ECF CII GreenCo Platinum SMETA 4 Pillar
Regulatory	REACH, ROHS
Food Contact	BfR Recommendation XXXVI BfR Recommendation XXXVI/2 US FDA CFR 21, §176.170 US FDA CFR 21, §176.180

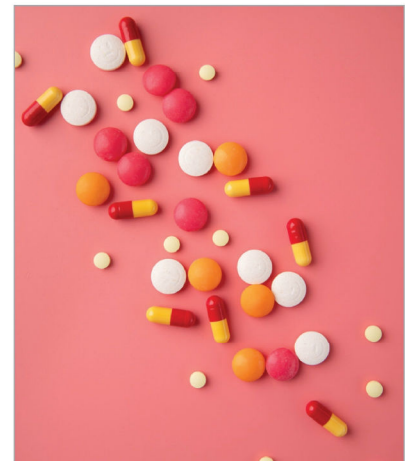
PARAMETER	UNITS	VALUE	
PLY BOND (Avg.)	J/m <sup>2</sup>	150 MIN	
ROUGHNESS PPS (Avg.)	μm	1.5 MAX 1.8 MAX 2.0 MAX	
GSM ≤ 250			
250 < GSM ≤ 340			
GSM > 340			
BRIGHTNESS	%	85 MIN	
TOP			
WHITENESS CIE	%	85 MIN	
TOP			
SURFACE STRENGTH IGT PICK (MED.VISCOSITY)	m/sec	0.7 MIN	
TOP			
GLOSS AT 75° (Avg.)	%	35(-5) MIN	
TOP			
MOISTURE	%	7.0±1.0 8.0±1.0	
GSM ≤ 300			
GSM > 300			

### CONSTRUCTION



#### Note :

1. All Properties are according to ITC PSPD Measurements
2. Test Climate 23°C ± 1 & 50% ± 2 RH
3. Tolerances are based upon 95% Confidence limits of single mill measurements of conditioned random samples
4. All parameters are measured as per relevant Tappi standards



FMCG



F&B



PHARMA



GARMENTS

\*ITC PSPD is a dynamic organization, constantly evolving in response to customer needs. The specifications in this folder are therefore subject to change. For latest spec sheet, contact marketing.itcpspd@itc.in